

ACP CLADDING

ALUMINOBOND®

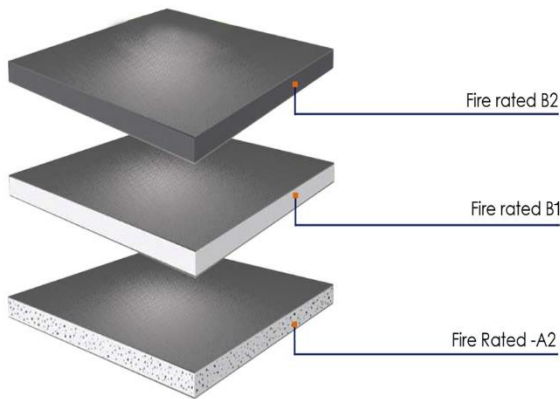
FIRE RATED METAL COMPOSITES

Modern cladding
that gives life
and protection



FIRE RATED METAL COMPOSITES

Core Selection:



ALUMINOBOND is a kind of new decoration material, which comes to attract great attention within a short time, due to its excellent performance, such as low cost, many available colors, convenient installation, good processing feature and outstanding fireproof characteristic, etc...

ALUMINOBOND composite panel can be cut, sheared, slotted sawed, punched, bent, riveted, bolted, stuck with glue.

FIREPROOF ALUMINUM COMPOSITE PANEL



There are 2 kinds of fireproof aluminum composite panel, B1 class and A2 class. For B1 class fireproof aluminum composite panel, it contains: 55% - 55% flame retardant the main ingredients are aluminum oxide (Al_2O_3) and magnesium oxide (MgO); When B1 grade panels are put on fire, it can be caught on fire after 5 minutes, and when the fire leave the panels, the fire on the panels will extinguish after 10 seconds. For A2 class. fireproof aluminum composite panel, it Contains 88% - 90% of the flame retardant the main ingredients are aluminium hydroxide ($Al(OH)_3$) and magnesium hydroxide ($Mg(OH)_2$); it can be caught on fire after 20 minutes, and the fire will extinguish at once) when the fire leave the panels.

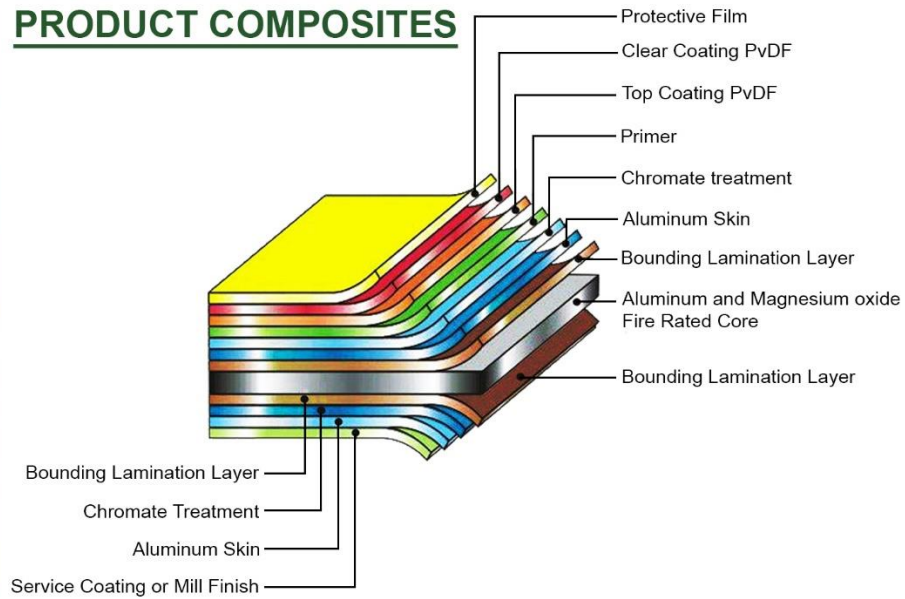
Items	Standard Inde	Test Value	Individual Judgment
Density of surfac	Rating \pm 0.5kg/m ²	6.8kg/m ²	Qualified
Impact strength	50kg.cmWithout paint off and crack	Without paint off and crack	Qualified
Bend strength	\geq 100MPa	\geq 104MPa	Qualified
Flexuous modulus of elasticity	\geq 2.00 x 10 ⁴ MPa	3.00 x 10 ⁴ MPa	Qualified
Through resistance	\geq 9.0KN	9.50KN	Qualified
Cutting strength	\geq 28.0MPa	29.0MPa	Qualified
1800peel strength	\geq 7.0N/mm	\geq 9.1N/mm	Qualified
Resistance to change of temperature	-400C~-800C20cycles without change	Unchanged	Qualified
Boiling water resistance	Unchanged	Unchanged	Qualified
Coefficient of heat expansion	\geq 4.00 X 10 ⁻⁵ 0C-1	2.93 X 10 ⁻⁵ 0C-1	Qualified
Heat deformation temperature	\geq 1050C	1120C	Qualified

The test result meets the index requirements of quality product of GB/T17748-1999

PRODUCT ADVANTAGES

- **LIGHTWEIGHT**, yet extremely rigid and flat resulting in an economical option for high quality building facades and interior cladding.
- **WEATHER RESISTANCE**, combined with high acoustics. Thermal and Fire rated values.
- **EXTENSIVE CHOICE**, combined with Solid, Metallic, Granite, Veneer, and Chameleon Colors.
- **HIGHLY MALLEABLE**, combined with shapes making it a versatile panel to achieve complex design solutions.

PRODUCT COMPOSITES



PVDF COATING ALUMINUM COMPOSITE PANEL



Aluminum skin thickness: 0.12mm-0.50mm
 Total panel thickness: 2mm-6mm
 Width: 1000mm, 1220mm(regular), 1250mm, 1300mm, 1500mm, 1550mm, 1575mm, 2000mm(maximum)
 Length: Up to 6500mm
 (Standard size: 1220mm(Width) × 2440mm(Length)
 Non-standard sizes and special colors are available depending on customers' offers

SPECIFICATIONS AND SIZES

WOODEN ALUMINUM COMPOSITE PANEL



Aluminum skin thickness: 0.12mm-0.50mm
 Total panel thickness: 2mm-6mm
 Width: 1000mm, 1220mm(regular), 1250mm, 1300mm, 1500mm, 1550mm, 1575mm, 2000mm(maximum)
 Length: Up to 6500mm
 (Standard size: 1220mm(Width) × 2440mm(Length)
 Non-standard sizes and special colors are available depending on customers' offers

MARBLE FINISH ALUMINUM COMPOSITE PANEL



Aluminum skin thickness: 0.12mm-0.50mm
 Total panel thickness: 2mm-6mm
 Width: 1000mm, 1220mm(regular), 1250mm, 1300mm, 1500mm, 1550mm, 1575mm, 2000mm (maximum)
 Length: Up to 6500mm
 (Standard size: 1220mm(Width) × 2440mm(Length)
 Surface Treatment: PVDF coating and PE coating
 Main aluminum composite wall panel Product: PE coated ACP, PVDF coated ACP, Nano PVDF coated ACP, Mirror finish ACP, Brushed ACP, Wooden ACP, Granite ACP and Fireproof core ACP
 Non-standard sizes and special colors are available depending on customers' offers

Mechanical Properties of Cover Sheet (05mm Aluminium /A3003-H16)

Density	2.72kg/cm ²
Tensile Strength	Rm≥140N/mm ²
0.2%Proof Stress	Rp0.2≥100N/mm ²
Elongation(50mm)	A50≥1%

Properties of Painted Finish

ALUMINOBOND is available with kynar 500-based fluorocarbon coating to meet following criteria.

Film Property	Test Method	Comments
Color Retention	ASTM D-2244-93	△ E5 Less
Gloss Retention	ASTM D-523-89	
Chalking	ASTM D-523-89	8unit
60°Gloss	ASTM D-523-89	20-30
Pencil Hardness	ASTM D-3363-92a	H-F
Formability (T-bend)	ASTM D-1737-62	2T No Crack
Adhesion: Dry Wet Boiling Water	AST D-3359,Method 8 37.8C,24hrs 1000C,20min	No Change
Reverse Impact-Crosshatch	NCCA 11-5	No Change
Abrasion Resistance	ASTM D-968-93(Falling Sand)	No Change
Salt Spray Resistance: 100%Salt Fog 350C 3,000hrs	ASTM 8117-90	No Change
Humidity Resistance: 100%Salt Fog 350C 3,000hrs	ASTM 82247-94	No Change
Chemical Resistance: HCL H2SO4 Mortar Detergent	ASTM D-1308-87 ASTM D-1308-87 AAMA 605.2-90 ASTM D-2248-93	No Change

ALUMINOBOND ACP COLOR CHART



ALB01 FLASHING SILVER GRAY



ALB02 FLASHING SILVER GRAY



ALB03 CHAMPAGNE



ALB04 BLUE SILVER



ALB05 WHITE



ALB06 IVORY WHITE



ALB07 SUB - WHITE



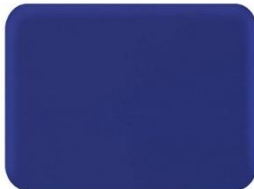
ALB08 JADE SILVER



ALB09 GOLDEN



ALB10 MALACHITE GREEN



ALB11 DARK BLUE



ALB12 CHINA RED



ALB12 JADE GREEN



ALB13 LIGHT BLUE



ALB14 LEMON YELLOW



ALB15 SHALLOW SKY BLUE



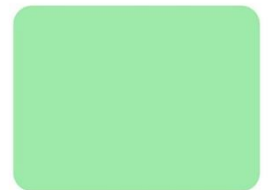
ALB16 ORANGE RED



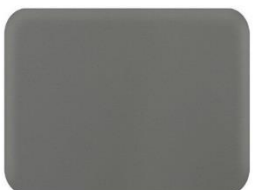
ALB17 ROSE RED



ALB18 POSTAL GREEN



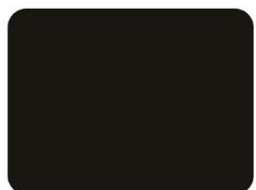
ALB19 GREEN WHITE



ALB20 RAT GREY



ALB21 BLUE



ALB22 BLACK



ALB23 DARK GRAY



ALB24 APPLE GREEN



ALB25 PINK



ALB26 ALUMINUM COLOR



ALB27 COPPER



ALB28 COFFEE



ALB29 DARK YELLOW



ALB30 LIGHT GREEN



ALB31 ANDROID GREEN

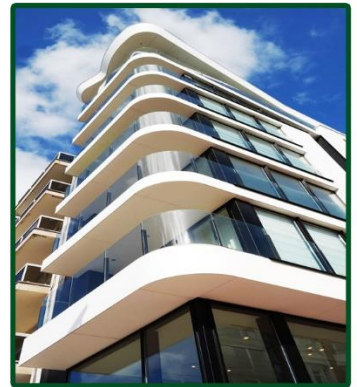


ALB32 TRAFFIC - YELLOW

ALUMINOBOND'S array of colors and finishes combined with the inherent capability of forming different shapes and contours with durability and weather resistance makes Aluminobond an Architect's Dream. Major Corporations and Multi National Companies have a definitive desire to make their structures an expression of Personal Designer Statement. Aluminobond becomes a natural choice to achieve this objective. The possible applications are limited to the architect's imagination. The versatility of Aluminobond Metal composite panels allow the product to have conventional as well as Exotic Applications

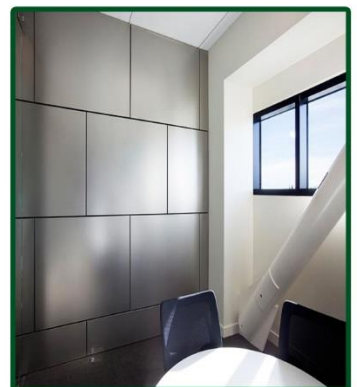
EXTERIOR WALL CLADDING

Premium Aluminum Composite Panel Sheets which are produced by ALUMINOBOND, are flat type panels, formed of thin aluminum sheets bonded to a non-aluminum core. In general, exterior aluminum composite panel sheets are used for architectural cladding or partition, false ceilings, machine coverage. It is an important part of building while construction mainly applied in shopping malls, cinema halls, hotels, hospitals and metro stations. These sheets are available in various colours, patterns and shapes according to the requirements of our clients



INTERIOR WALL CLADDING

The Interior Aluminum Composite Panel Sheets are washable, being provided with corrosion resistance, durability, unbreakable strength, and owing beautiful appearance. These interior ACP sheets are used for decorating interiors such as fall ceiling installation, curtain cladding, office partition, office table, chairs, covering of pillars which ultimately adds to strength and beautiful visual structure. These flat sheets are composition of aluminum sheets bonded to a non-aluminum core. These are appreciated for features such as stain resistance, washability and environmental friendliness.



ALUMINOBOND PROJECTS

ALUMINOBOND products have been installed globally. The ACP products consists of pre-finished siding panels and innovative mounting clips and accessories to ensure easy installation. The option to install the panels in either direction provides greater design flexibility.



FACADE ACP COMPLETED PROJECTS

THE RESIDENCES AT GREENBELT



MARC 1000



MARC 2000



TOTAL SOLUTION SYSTEM

ALUMINOBOND Total solution is designed to offer a complete Turnkey package of engineering, supply and installation of Aluminobond Fire Rated Metal Composites/ Aluminobond panels using an open joint silicon free ventilated substructure system with a full system warranty of 10 years.



The Total Solutions concept includes services from facade engineering, onsite building, onsite building survey, engineering drawing of projects specific fixing details, structural analysis of full system of panels with ABTI substructure, fabrication of panels and substructure, supply of full system including accessories to site, installation services by RWSI approved installer. Aluminobond approval of installed system and release of 10 years warranty for the full system.

WHY CHOOSE RWSI ALUMINOBOND?



Unparalleled beauty

Available in smooth finishes, rich textures and modern colors. From cool contrast to warm neutrals, its modern look are the latest way to create a truly beautiful building



Absolute value

The exterior siding system has been specially designed for quick, easy installation - saving you time and money during construction.



Trusted partner

We have been in business for 20 years and the products we offer are the best quality. We give you the assurance that you will be satisfied with our products and services.

FOR MORE INFORMATION

Call: (02) 891-4981 / 853-8844

or visit www.roofandwallsaver.com.ph

Email us at sales@roofandwallsaver.com.ph

The product images shown are for illustration purposes only and may not be an exact representation of the product.

RWSI SERVICES

- ✓ Exterior Wall Painting and Waterproofing of High-Rise Bldg.
- ✓ Wall System Interior Wall Painting
- ✓ Painting and Waterproofing of GI Roof with UV Resistant Polyurea & Polyurethane Spray Specialist (Japan)
- ✓ Waterproofing Works
- ✓ Floor Coating System
- ✓ Exterior Wall & Glass Cladding Cleaning
- ✓ Exterior Wall Panel System
- ✓ Roof Restoration
- ✓ Fit Outs
- ✓ Windows
- ✓ Sliding Doors